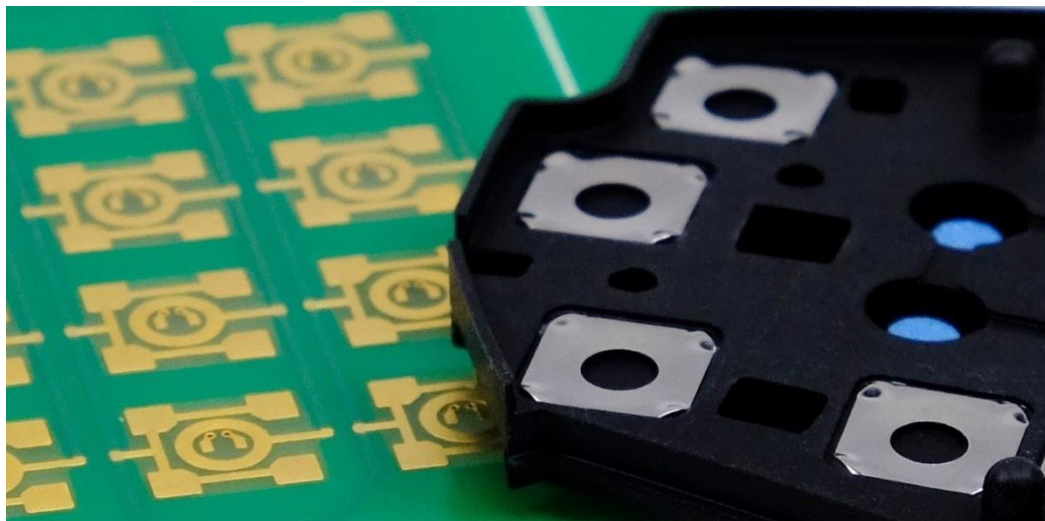




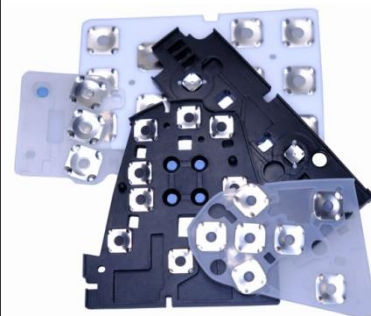
Input Solution



Description

Unique feel and sound generated through a combination of silicone keypad and metal domes.

- Metal domes are directly integrated into the keypad
- Short and long stroke are possible

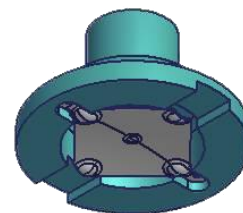


Advantages

- Customized force-way specification
- Customized acoustic
- Simple assembly
- PCB protection
- Light guiding and protection possible same as keypads
- Plastic caps are firm – no rattling
- Sealing function

Applications

- Keyfob
- Start / Stop
- Steering wheel
- Door handle
- HVAC / Entertainment
- IP switch
- Mobile
- Payment terminals
- Remote controls
- Selector switch
- and more



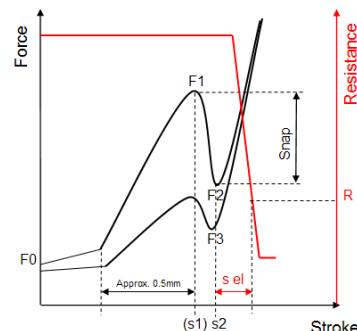
Metal dome directly integrated into silicone keypad

Key Tech. Data

Contact resistance [Ω]
Key diameter [mm]
Key height [mm]
Stroke [mm]
Actuating force [N]

- 1; 100
- 3.0 – 4.0
- 4.0 – 7.0
- 0.5 – 2.0
- 3.5 – 6.0 with one metal dome
- 8.0 – 11.0 with two metal domes
- 15 – 50
- ≥ 50 K (depends on Metal dome and PCB layout)

Snap [%]
No. of cycles [#]



Contacts

Europe:
America:
Asia:

Abatek International AG, Switzerland
Abatek (Americas), Inc., USA
Abatek (Asia) Co., Ltd., Thailand

saleseurope@abatek.com
salesamericas@abatek.com
salesasia@abatek.com

Phone: +41 44 843 11 11
Phone: +1 678 684 54 00
Phone: +66 2 729 9100

www.abatek.com